

Climate risk assessment service

*“Protect asset value, reduce future costs,
and make informed investment decisions
by understanding how climate impacts
could affect your properties over time.”*



Mariya Chervonogradska
Senior Consultant
Disclosure, Reporting and Risk
ESG Excellence

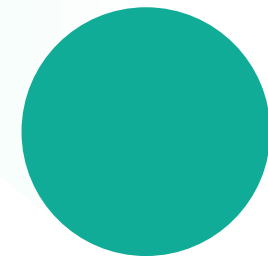
Climate risk assessment service

Is this you?



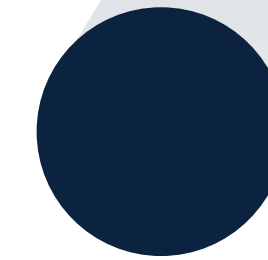
- You want to embed climate resilience into business practices.
- You need to identify which climate risks are most material to your assets—now and in the future—and develop a credible adaptation plan.
- You seek expert advice on which climate risk platforms are most reliable and relevant to your needs.
- You're looking to boost GRESB scores and align with regulations on physical climate risk assessments.
- You already implement low-carbon solutions but want to integrate them with climate adaptation in an single strategic CAPEX plan.

Drivers



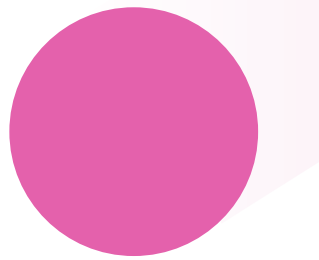
Floods, heatwaves, storms and other climate events are becoming more frequent and severe. Every year, billions are lost to climate-related hazards. Among many other consequences, these events disrupt asset operations and negatively affect occupant health and well-being. Those who act early -by assessing material climate risks, integrating adaptation into financial strategy, and enabling informed decision-making- will be best positioned to protect value, meet regulatory demands, and satisfy stakeholder expectations.

How we help



Our comprehensive assessment is a detailed evaluation of acute and chronic climate hazards across multiple warming scenarios and time horizons, including historical events. We deliver this analysis through leading third-party climate platforms, tailored to your goals—whether for regulatory compliance, damage cost modelling, or adaptation planning. Many clients already use climate platforms—we help interpret the results. We also engage property and facilities managers through custom vulnerability surveys or calls to generate heatmaps of hazard exposure and asset vulnerability.

Benefits



You will have an estimate of the financial impact of hazards, such as post-event downtime or asset value loss over time under different climate futures.

We provide a tailored and robust adaptation plan which addresses and mitigates the most material risks. With practical, site-specific actions, you'll enhance resilience and safeguard long-term asset performance.

For high-risk assets, our engineers assess sites and develop adaptation plans that also reduce carbon impact.