

# Manage embodied carbon service

*“It’s essential to manage embodied carbon emissions early if you want to achieve whole life objectives. Whole life embodied carbon assessments give you a complete picture of a project’s carbon impact, allowing you to identify savings upfront as well as across the whole life of each building.”*



**Leah McCabe**  
Principal Consultant  
Climate Strategy  
Sustainable Transition

# Manage embodied carbon service

Managing the whole life embodied carbon of developments and refurbishments is an important priority for real estate and construction professionals as they begin to implement climate-related projects. Measuring and managing your buildings' embodied carbon allows you to identify savings upfront as well as across the whole life of each building, so it is a crucial step in the net zero transition.

## Reasons to manage whole life embodied carbon:

**Investor and market demand:** Whole life embodied carbon is becoming more defined, regulations are expanding and investors now expect granular, transparent reporting. There's a rising need for accurate and compliant measurement and disclosure.

**Future planning:** Whole life embodied carbon emissions are locked in during design and construction. Managing them early is essential for achieving whole-life objectives.

**Climate responsibility:** Whole life embodied carbon is a major contributor to total building emissions, critical for net zero goals.

**Competitive advantage and long-term value:** You can differentiate your brand, reduce lifecycle costs, and improve resilience through sustainable design.

Click on the buttons below to find out more:

Whole life embodied carbon assessment

Whole life embodied carbon strategy and target setting

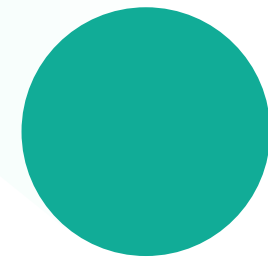
# Whole life embodied carbon assessment **service**

## Is this you?



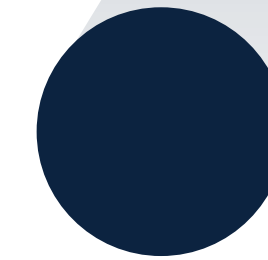
You are committed to reducing your project's carbon impact, but in order to gain an understanding of where the hotspots are, you need a robust measurement of the project's whole life or upfront embodied carbon across its lifecycle. You require a whole life embodied carbon analysis to meet client, investor, regulatory, and disclosure needs.

## Drivers



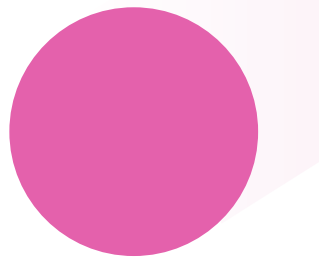
Industry standards, regulatory frameworks and investors increasingly require granular whole life or upfront embodied carbon measurement and disclosure, as well as associated reduction strategies and targets. Data informing whole life embodied carbon assessments is becoming more readily available and accurate. Clients and investors now expect projects to align with wider net zero carbon objectives.

## How we help



Using desk-based modelling, market leading software and carbon databases, our experienced team produces detailed whole life embodied carbon assessments tailored to your organisation's scope and objectives. We supplement this with desk-based and onsite building audits to measure operational emissions. We provide benchmarking and data-driven insights and a report that integrates seamlessly with your other climate-related disclosure needs.

## Benefits



Whole life embodied carbon assessments give you a complete picture of a project's carbon impact. They support the identification of carbon reduction opportunities at each stage of the lifecycle, demonstrate transparency and accountability, and provide opportunities to collaborate with upstream and downstream suppliers to reduce emissions. The outputs of a whole life or upfront embodied carbon assessment feed other mandatory and voluntary disclosures such as GHG reporting, CDP and GRESB, and enable informed decision making.

# Whole life embodied carbon strategy and target setting **service**



## Is this you?

You manage new developments, major refurbishments and/or redevelopments within a portfolio of other asset classes or on behalf of a construction development organisation. You want to set a realistic and achievable target for the whole life embodied carbon of these developments. This needs to meet business and investor needs and align with carbon budget trajectories. You also require a practical plan for achieving this target.



## Drivers

Operational emissions are reducing, so regulatory and investor requirements are increasingly focused on whole life embodied carbon impacts instead. Stakeholders now expect transparency and accountability, and acting early ensures better preparation for a low-carbon future.



## How we help

We work with you to define your ambition, understand your key upstream and downstream stakeholder needs and influence, and define realistic science-based targets tailored to your projects. Our expert team provides data analysis, benchmarking and insight that help you integrate your targets into the wider business objectives.



## Benefits

Have a clear understanding of the carbon reduction opportunities and challenges ahead.  
A strategy will help you to stay ahead of regulatory changes, market demands and supplier trajectories.  
Setting a target demonstrates leadership and ambition within the market and enables smart decisions and long-term resilience.