

# Asset replacement plan

*“Decide what to replace, when to invest,  
and how to avoid locking in cost and carbon  
– before committing major CAPEX.”*



**Matt Dickinson**  
Head of Service  
Capital Projects  
Sustainable Transition

# Asset replacement plan

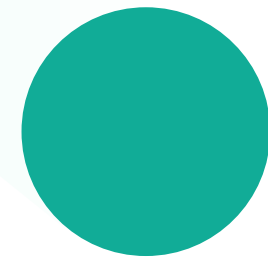
## Is this you?



Your utilities vary in terms of condition. They are getting older and becoming harder to align with cost, resilience and carbon targets.

You need a clear plan that avoids reactive, like-for-like replacement (and the carbon lock-in that comes with it).

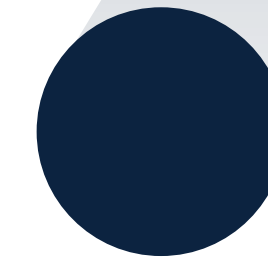
## Drivers



Utility assets now need to work harder. They must reduce costs, improve resilience and support net zero.

With rising utility costs, new technologies and increasing pressure to move away from fossil fuels, like-for-like replacement is no longer enough.

## How we help

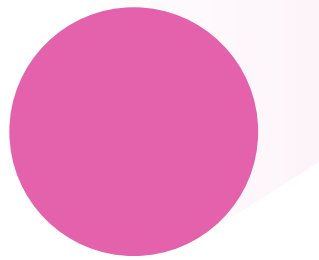


We assess your key utility assets, rank them in terms of condition, performance, criticality and carbon risk, then build you a phased replacement roadmap.

We help you manage risk and spend by stage-gating our approach. This helps you make informed decisions early and at low cost, before moving into feasibility, detailed design, procurement or major investment.

The result is a clear, prioritised CAPEX plan that balances cost, operational risk and decarbonisation.

## Benefits



- Prioritise CAPEX where it creates most value.
- Avoid carbon lock-in from poor replacement decisions.
- Reduce risk through early-stage, low-cost decision gates.
- Build a practical roadmap for asset replacement and decarbonisation.
- Identify cost-saving opportunities across heat, power, cooling, air and water systems.