

Sustainability impact of digital **service**

“In a world where digital systems run the business, digital sustainability ensures that sustainability is built into the IT infrastructure, data, platforms and decisions that shape growth and resilience.”



Danilo Perrucci
Global Head of
Sustainability and Energy
Management

Sustainability impact of digital **service**

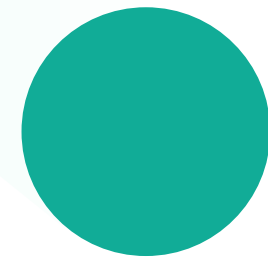
Is this you?



Your organisation is becoming more digital every year, but you do not yet have a clear view of how cloud, data, software and IT infrastructure affect your sustainability performance.

You suspect digital is part of the solution, but also part of the problem – and you need clarity on where the real impacts and opportunities lie.

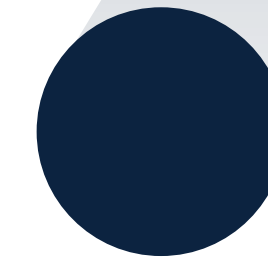
Drivers



Digital technologies now sit at the heart of how organisations produce, move, sell and report. Cloud platforms, enterprise software, data and automation are transforming value chains and operating models.

At the same time, these digital systems drive energy use, emissions, water consumption, data flows, transparency and social outcomes. Understanding their sustainability impact is becoming essential for compliance, investment decisions and long-term competitiveness.

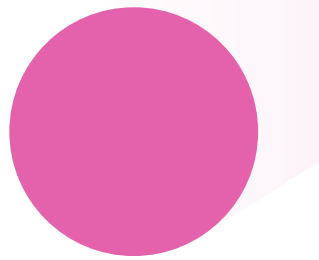
How we help



BIP.Verco helps organisations analyse and quantify the sustainability impact of their digital ecosystem, from data centres and cloud to applications, data and digital processes.

We assess how digital technologies influence environmental performance, transparency, risk and value creation, providing evidence-based insights that support strategy, reporting and investment decisions.

Benefits



- Understand the true sustainability footprint of digital assets, platforms and data
- Identify where technology reduces emissions, waste and inefficiencies
- Detect hidden risks linked to cloud, data and digital supply chains
- Support better investment and sourcing decisions
- Improve ESG and CSRD reporting quality
- Strengthen trust with regulators, investors and customers